

**ITEM 21. PARKING – DISABILITY PARKING – MCELHONE STREET
WOOLLOOMOOLOO**

TRIM RECORD NO: 2015/056298

RECOMMENDATION

It is recommended that the Committee endorse the reallocation of parking on the eastern side of McElhone Street, Woolloomooloo north of Pring Street as follows:

- (A) Between the points 36 metres and 42 metres (1 car space) as “Disability Parking”;
- (B) Between the points 42 metres and 48 metres (1 car space) as “No Parking”.

DECISION

BACKGROUND

Mariners Court Hotel Management of 44-50 McElhone Street has requested consideration of moving the current “Disability Parking” space to the south so as to effectively use the kerb ramp currently within disability parking space.

COMMENTS

The kerb space on the eastern side of McElhone Street, Woolloomooloo north of Pring Street is primarily signposted as ‘1P 8am-6pm Mon-Fri Permit Holders Excepted Area 28’.

On-site inspection shows there is a need to move the “Disability Parking” space south and reallocate the kerbspace as “No Parking” to facilitate wheel chair access to the existing kerb ramp at all times.

CONSULTATION

The City consulted local residents and businesses in the area. There were 167 letters sent out and no response received either supporting or opposing the proposal.

FINANCIAL

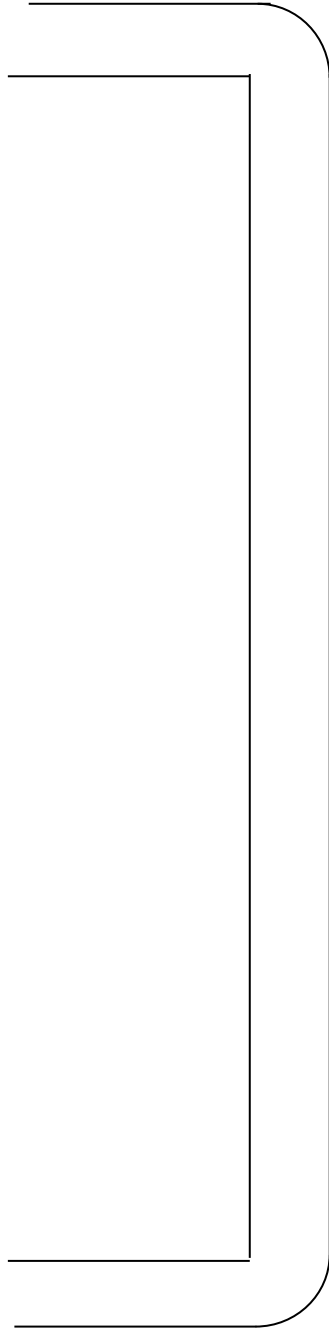
Funds are available in the current budget.

ATTACHMENTS

Parking – Disability Parking – McElhone Street Woolloomooloo

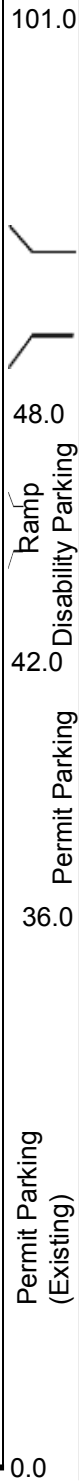
Shan Shanmugalingam, Technical Support Officer

NESBIT STREET



PRING STREET

MCELHONE STREET



Disability Parking (Proposed)

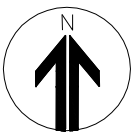
Disability Parking (Existing)

No Parking (Proposed)

Permit Parking (Existing)

Permit Parking (Existing)

MARINERS COURT HOTEL



PROPOSAL

MCELHONE STREET, WOOLLOOMOOLOO
 PROPOSED PARKING CHANGES

